

SALEM TOWNHOMES



FLAGSHIP HOMES

3 Bedroom + Office, 2.5 Bath

www.flagshiphomes.com

Ph. 801.766.4442



UNIT 1
2,278 Sq.Ft.

UNIT 2
2,232 Sq.Ft.

UNIT 3
2,240 Sq.Ft.

UNIT 4
2,282 Sq.Ft.

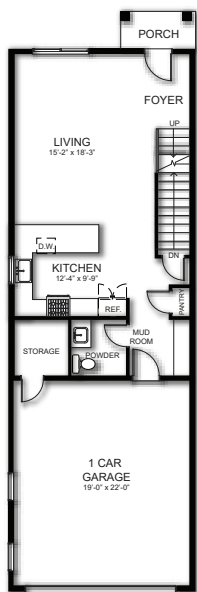


Flagship Homes or its entities reserve the right to change elevations, specifications, floor plans, window placement, materials, and prices without notice. All sq footages are approximate. The availability of certain options is subject to construction status and schedule. Optional features may be predetermined and included at additional cost. Renderings are Artist's conception only. *Double ovens are a standard in the Parkside and Hampton Subdivisions. Double master sinks and showers are standard in the Willows, Willis, Parkside, and Hampton subdivisions.

www.flagshiphomes.com

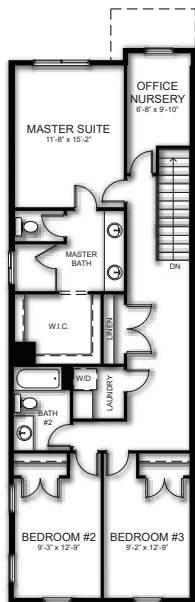


SALEM TOWNHOMES 4-PLEX

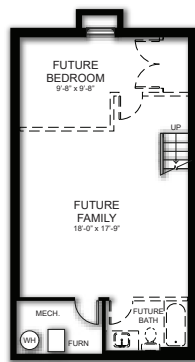


First Floor

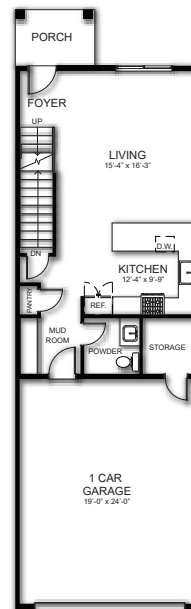
Unit 1 - 2,278 Sq.Ft.



Second Floor

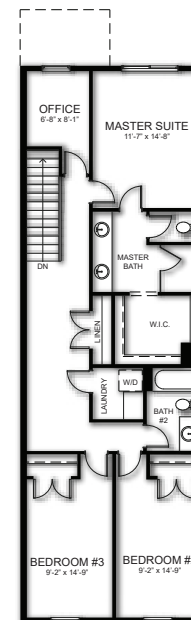


Unfinished Basement Floor

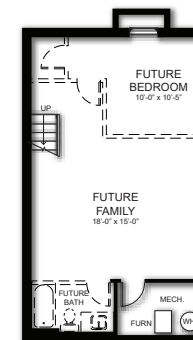


First Floor

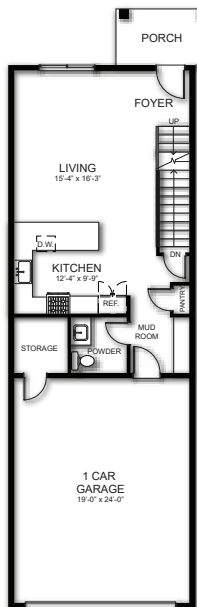
Unit 2 - 2,232 Sq.Ft.



Second Floor

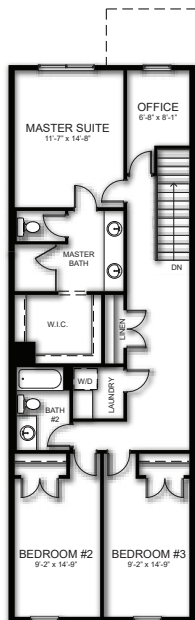


Unfinished Basement Floor

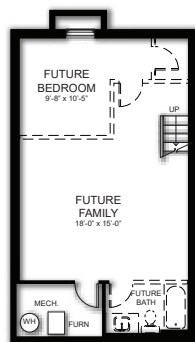


First Floor

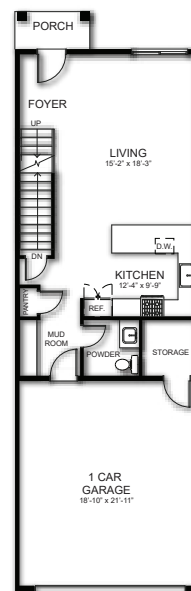
Unit 3 - 2,240 Sq.Ft.



Second Floor

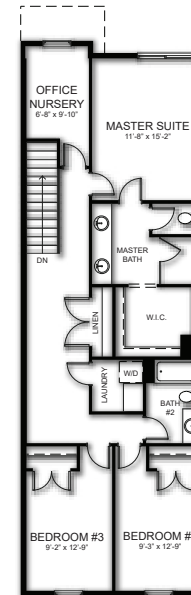


Unfinished Basement Floor

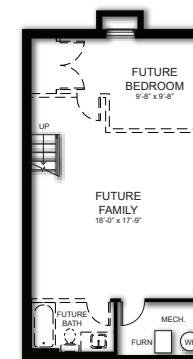


First Floor

Unit 4 - 2,282 Sq.Ft.



Second Floor



Unfinished Basement Floor